

# INTRODUCING



GRILLES • REGISTERS • DIFFUSERS



## *New 2x2 Light Commercial Diffusers... Premium Quality & Innovative Design.*

- *EXCLUSIVE - Adjustable Cones*
- *Heavy Gauge Steel*
- *No Sharp Surface Edges*
- *Hand Inspected*
- *Powder Coat Finish*

- *Special Protective Packaging*
- *Fastest Shipping in the Industry*
- *100% Order Fill*
- *E-Mail Acknowledgement/Tracking*
- *Intelligent Skid Documentation*

# A Full-Line Of 2x2 Diffusers That Match Your Installation Requirements.



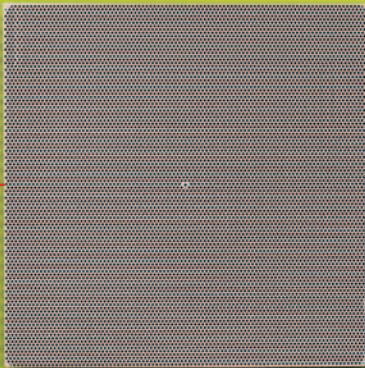
Light Commercial 2x2 Diffuser **3-Cone**  
Available with 6", 8", 10" or 12" collar  
Order with or without Insulation



Light Commercial 2x2 Diffuser **2-Cone**  
Available with 6", 8", 10" or 12" collar  
Order with or without Insulation



Both 2-cone and 3-cone Diffusers feature an **innovative cone design** that is adjustable to allow sleek flush look, or can be pulled into the extended position for maximum air flow.

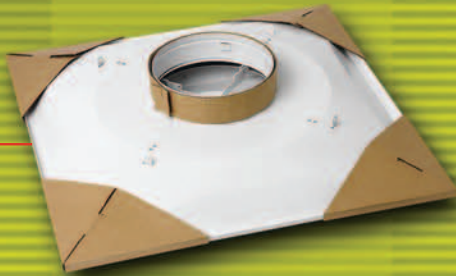


Light Commercial 2x2 Diffuser **Perforated Insulation** is standard  
(2x2 Return Grill Also Available)

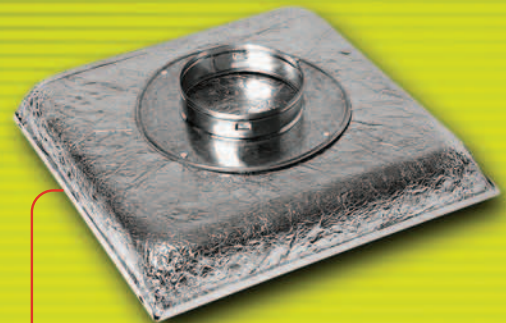


Diffusers feature a long **2 1/4" collar** with a form rib for easy flex duct connection and slots for quick attachment of Butterfly Damper.

**Butterfly Damper** features smooth operation and guide tabs for quick attachment to Diffuser. 6", 8", 10", 12" dia.



Diffusers are **individually packaged** with additional corner pad and collar protection.



Collar Ring for **Perforated Diffuser** provides easy connection of flex duct. 6", 8", 10", 12" dia.

Call today for complete information!

**800-835-2830**

[www.metal-fabinc.com](http://www.metal-fabinc.com)



GRILLES • REGISTERS • DIFFUSERS

P.O. BOX 1138 • WICHITA, KS 67201  
(316) 943-2351 • FAX (316) 771-4154  
e-mail: [info@metal-fabinc.com](mailto:info@metal-fabinc.com)